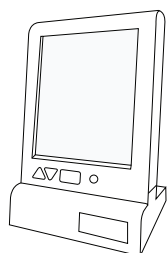
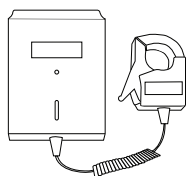


Energy monitor equipment

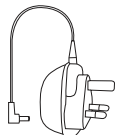


A Current Cost monitor

B Transmitter and sensor jaw

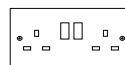


C Display unit power supply

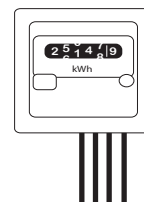


What you need in your home

Plug sockets x2

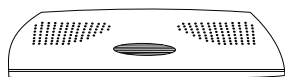


Electricity meter



Rest of the kit

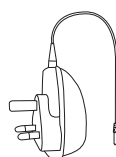
D Data collector



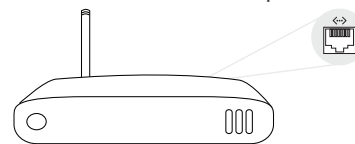
E Ethernet cable



G Data collector power supply



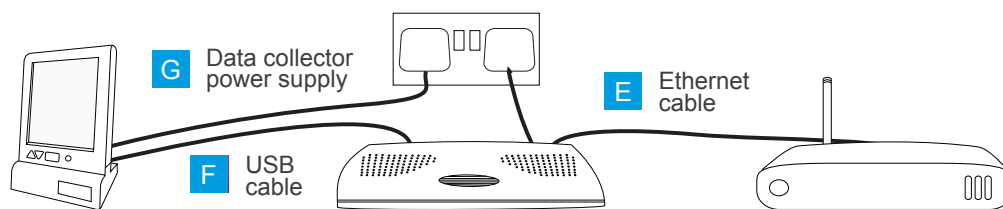
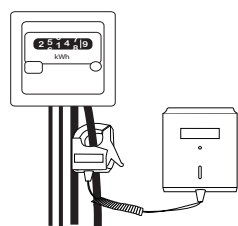
H Broadband connection and modem / modem router with free ethernet port



F USB cable



Set-up after installation



Setup the Current Cost Monitor

Follow the instructions in the Current Cost box or on their online setup video at:

www.currentcost.com/installation.html When the monitor is showing your data you are ready for the next step.

Connect Data Collector to the internet

Connect one end of the ethernet cable **E** to the data collector **D** using any of the 5 sockets and plug the other end into your broadband modem / modem router **H**.

Plug the power supply **G** into the back of the Data Collector **D** and a suitable plug socket. The Data Collector should switch on automatically. When working properly there will be two green lights constantly lit, two orange lights constantly lit and one flashing green light.

Connecting the Current Cost Monitor to the Data Collector

Plug the USB cable **F** into the base of the Current Cost monitor **A** and the other end into one of the USB sockets on the back of the data collector **D**.

Join the energyhive community and compare your energy usage with other members

To register to view your electricity usage you will need to use a computer that is in your home i.e. using the same internet router (wireless or connected via a cable) that the Data Collector is connected to.

Go to www.energyhive.co.uk where you can register an account.

Whenever you want to view your electricity usage login to www.energyhive.co.uk from any computer.